



# IEC-3300

## Fanless BOXed Chassis System with Intel® Celeron® / Atom™ Processor



### Features

- Ultra Low Power and Fanless Design
- VGA/ HDMI output supported
- Optional Wi-Fi Connection supported
- Rugged Design for Shock/Vibration Protection
- Easy Installation/Maintenance

### System

CPU	Soldered onboard Intel® Celeron® Processor N2807 dual-core 1.58GHz / J1900 quad-core 2GHz
	Intel® Atom™ E3800 Processor by OEM Request
Memory	1 x 204-pin DDR3L SO-DIMM socket, supporting 1600MHz SDRAM up to 8GB
	Optional pre-install 2GB/4GB DDR3L SO-DIMM Memory Module
Graphics	Integrated Intel® HD Graphic
LAN Chipset	2 x Realtek RTL8111E PCIe GbE controllers
Watchdog Timer	1~255 levels reset

### I/O

Serial Port	1 x DB-9 male connector for RS-232
USB Port	1 x USB 3.0 port 3 x USB 2.0 ports
LAN	2 x RJ-45 ports for GbE
Video Port	1 x DB15 female connector for Analog RGB 1 x HDMI port
Audio	1 x Phone jack connector for Line-out
Expansion Bus	1 x Mini-card socket (Half Size)

### Environmental

Operating Temp.	-20 ~ 55°C ( -4 ~ 131°F), ambient w/ air flow
Storage Temp.	-40 ~ 85°C (-40 ~ 185°F)
Operating Humidity	10 ~ 95% @ 60°C (non-condensing)
Vibration	3 Grms/5~500Hz/random operation
Shock	Operating 40G (11ms), Non-operating 60G with mSATA

### Qualification

Certification	CE, FCC
---------------	---------

### Power Requirement

Power Input	DC 12V input
Power Consumption	0.77A@12V (typical w/ N2807) 1.04A@12V (typical w/ J1900)

### Storage

Storage	1 x mSATA socket, Optional pre-install 16GB/32GB mSATA SSD
	Soldered onboard 16GB eMMC (OEM request for Intel® Atom™ E3800 family only)

### Mechanical

Construction	Aluminum alloy
Weight	0.6kg (1.32lb, Barebone)
Dimensions (W x D x H)	163 x 109 x 39 mm (6.41" x 4.29" x 1.54")

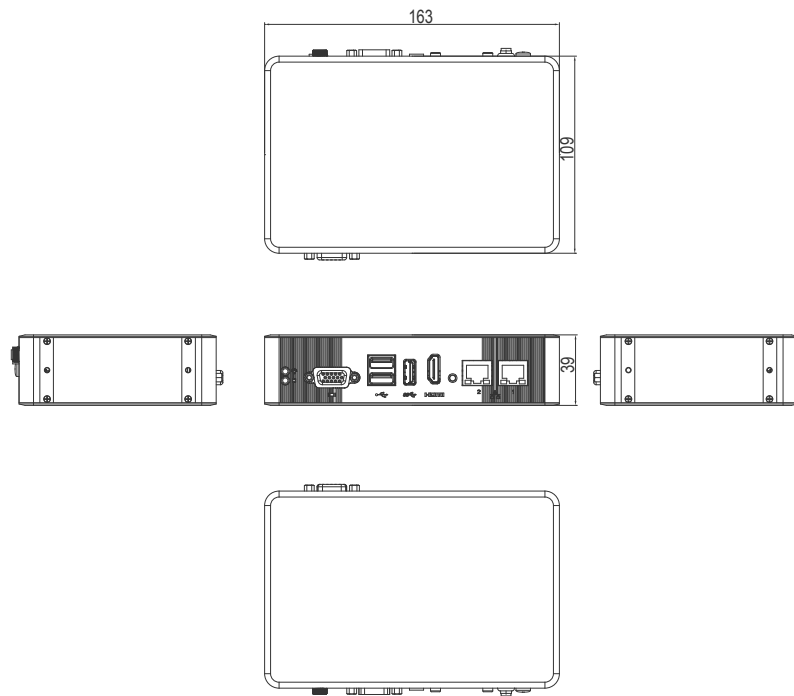
### OS Support

Windows 7 32-bit/64-bit  
Windows 8.1 32-bit/64-bit  
Windows 10 IoT  
Linux: Ubuntu

### Ordering Information

IEC-3300-N2807	Barebone system with Intel® Celeron® Processor N2807
IEC-3300-J1900	Barebone system with Intel® Celeron® Processor J1900

## Dimensions



### Standard Accessories

Power Adaptor 12VDC, 5A, 60W, 2.5φ JACK, AC/DC Adaptor with power cord

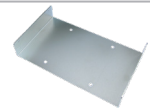


WMK-3300 Wall mount kit



### Optional Accessories

VMK-3300 VESA mount kit



### Optional Configuration (CTOS\* Kit)

WiFi-AT2200 Atheros AR9462 Wi-Fi module w/ 15cm internal wiring



ANT-D11 1 x Wi-Fi Dual-band 2.4G/5G antenna



2GB SO-DIMM DDR3L-1600 2GB SO-DIMM Memory module

4GB SO-DIMM DDR3L-1600 4GB SO-DIMM Memory module



8GB SO-DIMM DDR3L-1600 8GB SO-DIMM Memory module

16GB SSD mSATA MLC 16GB

32GB SSD mSATA MLC 32GB



\*CTOS means Configure-to-Order Service.